

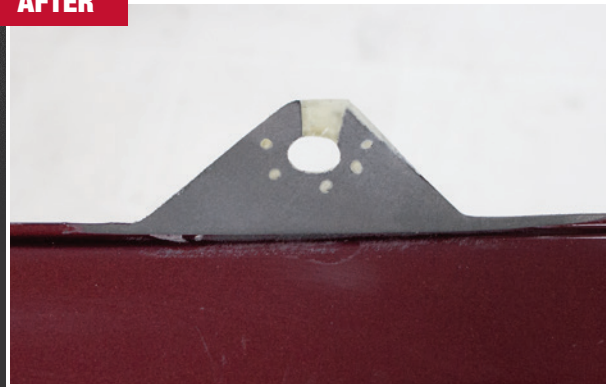
SEM[®] PLASTIC TAB REPAIR

FOR: BUMPERS | HEADLIGHTS | TAIL LIGHTS | RADIATOR SUPPORTS

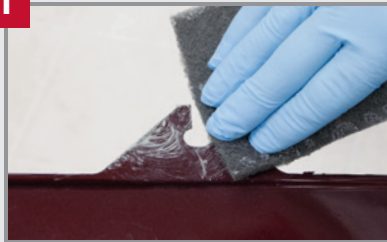
BEFORE



AFTER



1

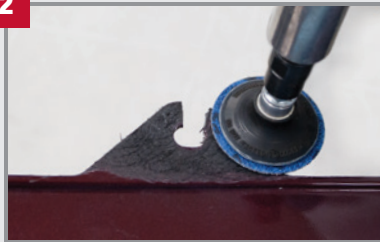


CLEAN & PREP

Clean with **38338 SCUFF & CLEAN** and a gray scuff pad. Rinse with water and dry.

Clean with **38353 PLASTIC & LEATHER PREP** wiping in one direction with a clean, lint free towel.

2



GRIND

Grind repair area on low rpm with 36 grit grinding disc.

Drill 1/8" holes around repair area to help "anchor" the repair material.

Blow off and reclean repair area with **38353 PLASTIC & LEATHER PREP**.

3



ADHESION PROMOTER

Apply **77723 XXX ADHESION PROMOTER** or **39863 PLASTIC ADHESION PROMOTER** per directions to the tab and allow to dry for 5-10 minutes.

4

OPTIONAL

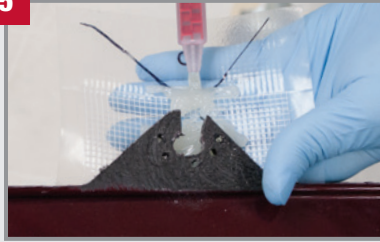


TRACE GOOD TAB

Using **70007 PLASTIC REPAIR CONTOURING TAPE**, cut enough material to fold around both sides of the tab. A **SHARPIE[®]** can be used to duplicate a broken or missing tab by tracing a good tab located on the bumper.

For more information see the **Tech Tip** on our website "**Using A SHARPIE[®] To Duplicate Tabs On Bumper Covers**".

5



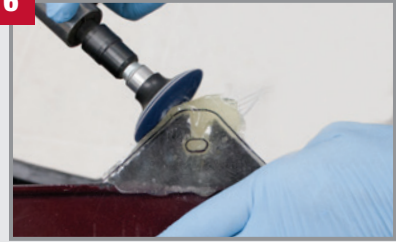
APPLY QUICK SET ADHESIVE

After purging the cartridge, apply **40207 QUICK SET 20** to the **70007 PLASTIC REPAIR CONTOURING TAPE**.

While wet, fold the tape around the torn or missing tab. After cool down, remove the plastic film from the mesh.

To achieve the same result in higher temperatures, use **40507 QUICK SET 50** with a silver **SHARPIE[®]**.

6



FINISH

With a grinder, shape the tab back to its original shape and size.

Sand the area with 80 and then 180 grit sandpaper.

Re-drill the bolt hole and the job is ready for primer and paint.