



CUSTOM AEROSOLS

CUSTOM AEROSOLS

EVERYTHING YOU NEED TO FILL YOUR OWN AEROSOLS



QUICK, CLEAN, & EASY TO USE

LIMITLESS COLOR COMBINATIONS

SOLVENT & WATERBORNE BLANKS



INCREASE
REVENUE
WITH
CUSTOM
AEROSOLS



SEM 61
CUSTOM FILL
FOR
COLOR COAT
FLEXIBLE COATING (PRETREATMENTS, FLEXERS)
Net wt. 3.9 oz. / 110 g

SEM 61
CUSTOM FILL
For 1K and 2K acrylic urethane, enamel and lacquer
Pour 1K et 2K uréthane acrylique, email et laque
1K Pre-mixed 2K
Net wt. 8.4 oz. / 240 g

SEM 62013
HIGH BUILD CUSTOM FILL+
Provides higher build and quicker coverage for 1K and 2K solvent primer, color & clearcoat
Fournit plus d'épaisseur et une couverture plus rapide pour 1K et 2K primaire solvant, couleur et vernis
1K Pre-mixed 2K
Net wt. 3.9 oz. / 110 g

SEM 62003
WATERBORNE CUSTOM FILL
Waterborne basecoat and clear waterborne coatings
Fond à base d'eau et autres revêtements à base d'eau pour l'automobile
Net wt. 7.04 oz. / 200 g

FILL MACHINES & ACCESSORIES



Custom Fill Manual Machine

Part: 70801

Fills aerosols on location without an air compressor.

COMPATIBLE BLANKS

- Custom Fill
- Custom Fill Waterborne
- Custom Fill Color Coat
- Custom Fill+ High Build

AVERAGE FILL RATE

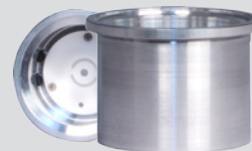
Up to 35 cans per hour

Custom Fill Cylinder

Part: 70706

COMPATIBLE MACHINE

- Custom Fill Pneumatic Machine



Custom Fill Pneumatic Machine

Part: 70701

Requires an air compressor and fill aerosols quickly.

COMPATIBLE BLANKS

- Custom Fill
- Custom Fill Waterborne
- Custom Fill Color Coat
- Custom Fill+ High Build

AVERAGE FILL RATE

Up to 70 cans per hour

OMNI-FILL MACHINE CONVERSION KITS

Female Conversion Kit

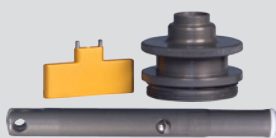
Part: 72011

CONVERTS

- Omni-Fill 11 Fill Machine

COMPATIBLE BLANKS (AFTER INSTALLATION)

- Universal Color Coat
- Multi-Coat



Female Filling Head

Part: 72000

CONVERTS

- Omni-Fill 14 Fill Machine
- Omni-Fill 35 Fill Machine
- Omni-Fill 100 Fill Machine

COMPATIBLE BLANKS (AFTER INSTALLATION)

- Universal Color Coat
- Multi-Coat



TECH TIP

SAVE COUNTER SPACE BY UTILIZING A CUSTOM FILL WALL BRACKET

Custom Fill Wall Bracket

Part: 70704



CUSTOM FILL™ AEROSOL BLANKS

16 OZ. AEROSOL | PROFESSIONAL SPRAY PATTERN | COMFORT TIP



Custom Fill Aerosol Blank

Part: 61993

Fill with solvent paints such as urethane basecoat, single stage, acrylic, and alkyd enamels or acrylic lacquers.

COMPATIBLE PAINTS

- Solvent basecoats
- Single stage urethane basecoats
- Enamel basecoats
- Acrylic & alkyd enamels
- Acrylic lacquers



Custom Fill Color Coat™ Aerosol Blank

Part: 61983

Create custom aerosols with **Color Coat™** toners, the leading interior refinish system for over 25 years.

Change or renew color on most flexible and rigid plastics, carpet, vinyl and velour.

COMPATIBLE PAINTS

- Color Coat



Custom Fill Waterborne Aerosol Blank

Part: 62003

Use waterborne paints such as **Sure-Coat™** or waterborne basecoats to fill these blanks.

COMPATIBLE PAINTS

- Sure-Coat
- Waterborne basecoats



Custom Fill+ High Build Aerosol Blank

Part: 62013

Designed for use with 1K and 2K primers, basecoats, and clears that demand a higher film build or contain high solids.

COMPATIBLE PAINTS

- 1K solvent primers
- 2K primers
- Urethane and enamel single stage paints
- Solvent basecoats
- 1K and 2K clearcoats
- Rust Trap™

OMNI-FILL AND OLDER FILLON MACHINES | 16 OZ. AEROSOL



Universal Color Coat Aerosol Blank

Part: 15993

IMPROVED ATOMIZATION, COVERAGE AND FAN PATTERN.

Create custom aerosols with **Color Coat** toners, the leading interior refinish system for over 25 years.

Change or renew color on most flexible and rigid plastics, carpet, vinyl and velour.

COMPATIBLE PAINTS

- Color Coat



Multi-Coat™ Aerosol Blank

Part: 61003

IMPROVED ATOMIZATION, COVERAGE AND FAN PATTERN.

Fill with enamel, lacquer and vinyl resin systems. This convenient aerosol gives you the freedom you need.

COMPATIBLE PAINTS

- Solvent basecoats
- Single stage urethane basecoats
- Enamel basecoats
- Acrylic & alkyd enamels
- Acrylic lacquers

HOW TO FILL A CUSTOM FILL™ AEROSOL BLANK

1

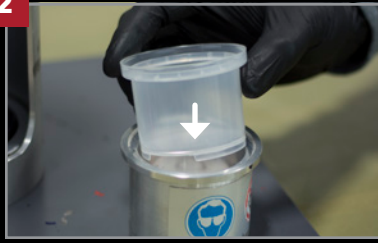


PLACE DISC IN MACHINE

⚠ Air pressure must be at least 120 PSI at the pneumatic machine for proper function.

Remove disc from cap and cover piston inside the fill machine.

2



PLACE CAP INTO CYLINDER

Place clear plastic cap cup into the **Fill Cylinder**. Press down and rotate cap until it drops into place.

⚠ Do not fill cap prior to inserting in **Fill Cylinder**.

3



FILL WITH COMPATIBLE PAINT

Remove the tip from the aerosol.

Press the cylinder/cap assembly on top of aerosol blank.

Fill the clear plastic cap with paint to the fill line.

⚠ Make sure the **Custom Fill Aerosol Blank** is compatible with coating type.

4



LOCK ASSEMBLY IN PLACE

Place assembly into machine.

Hold cylinder and can assembly in place and tighten pedestal on bottom.

5



FILL THE AEROSOL

Close door on **Custom Fill Machine**.

MANUAL MACHINE: Rotate crank until it stops and then rotate in the opposite direction until it stops.

PNEUMATIC MACHINE: After closing the door, the machine will fill the aerosol. Wait until the machine is silent. Open the door and loosen pedestal to remove assembly from the machine.

6



REMOVE CAP & REPLACE TIP

Remove cylinder/cap assembly from aerosol blank. Hold cylinder and press down on a hard surface to remove clear cap.

Replace tip.

⚠ Purge valve by test spraying for a few seconds until spray is uniform.



TECH SUPPORT 1-800-831-1122
CUSTOMER CARE 1-866-327-7829



tech@semproducts.com
cust_care@semproducts.com

